



Mt Cook Mobilised

mtcookmobilised@gmail.com

www.mtcook.wordpress.com

www.mtcookmobilised.pbwiki.com

ADELAIDE ROAD PROJECT MUST BE IN TUNE

There are big issues inherent in the development of Adelaide Road, from Basin Reserve to John St. It is our eastern boundary and our border with the Town Belt on Mt Victoria. We have told Council we want greater walking access to the Mt Vic Town Belt. Traffic development in Adelaide Road will also have a flow-on effect on our streets, notably Wallace and Tasman Streets, which must be moderated. Wellington City Council should give greater recognition to social needs and have an active community development role. The framework has proposals for development in that area over the next 20 years.

Mt Cook Mobilised said a community facilitator should be appointed for Mt Cook, and the Council should work with residents to develop community facilities.

Mt Cook Mobilised made a submission on the draft Adelaide Road framework. We also talked to the submission at the Council committee considering it, on 6 November.

The submission covered several other issues. We have significant concerns about the building heights proposed for Adelaide Road and the surrounding area.

- There is a risk that Adelaide Road itself could become a chasm between two walls of high buildings (some eight storeys) and that buildings up to six storeys high could be built very close to character and heritage housing. We urged that the final framework remove this risk by tight requirements on the design of buildings to reduce or stagger the heights, step back roof lines and vary the building facades.

The Council should develop clear traffic projections for the North/South routes through Mt Cook, and also the East/West flows on Hutchison Rd and Bidwill St. No traffic forecasts were given in the framework.

- We supported the proposals for open spaces and the connections between them, and made a number of specific points about ease of access e.g. for prams and bicycles. We also emphasised the need for effective design, supervision and maintenance requirements for access ways and small open spaces.

Mt Cook Mobilised wants ongoing involvement in the preparation of design guides and evaluations of developments, and recommends formal reviews of the framework every five years. The Council should participate actively in the development of the area e.g. by public/private partnerships in the funding of path-setting new buildings.

The Council is to approve a final framework in late 2008, and then prepare draft changes to the District Plan to support that framework.



No 2 - November 2008

MT COOK! MOBILISED

Welcome to the second Mt Cook Mobilised Newsletter. Read about the issues we are lobbying for. We are pleased to report that Council has answered our plea to install a new pedestrian crossing on Wallace St near Howard St - thank you WCC. Also many thanks to the Southern Cross, 39 Abel Smith St, for sponsoring the newsletter printing. Now, read on...

MEMORIAL PARK

After six months of air-quality monitoring, the Memorial Park project restarted its design competition. Mt Cook Mobilised wrote to the Minister for Arts, Culture & Heritage to support Mt Cook School's case. The Ministry has replied that we will be invited to have a say. The park

design is now being prepared at the same time and in concert with the traffic-improvement plans for the Basin Reserve. When we get the opportunity, we will represent the school and suburb's interests in the park project.



Mt Cookies joined the pageantry of the Puke ahu Project community parade on 19 September. Playwright Lynda Chanwai-Earle (with pushchair) and Wellington High School must be congratulated for this and the play's performances the following week.



"In my corner of Mt Cook, it is great to see the care that is going into the restoration of No1 Ranfurly Tce [below], Sue Stewart says. "I feel relieved that the former owner, Irene Emery [left], did not live to see the destruction of the Boys & Girls Institute on Tasman St. Her father laid the original tiles in the late and lamented swimming pool." Irene's character was in the *Puke ahu* drama. She was born in this house in 1898 and lived there all her long life (to 2006!).

Congratulations to the new owners.



Left MCM member Jane Loughnan competing in the Vancouver World Triathlon Championships. "Months of hard work and determination paid off," Jane says. With 12°C water and a 4-metre swell "none of us were really looking forward to the swim." Jane was the 2nd kiwi home - with a Personal Best in the 10km!

PAPAWAI RESERVE PROJECT

Tucked between our suburb and the Prince of Wales Park in the Town Belt, an overgrown stream is being cleared and planted by Mt Cook Mobilised. Once a rubbish tip, the area runs between Papawai and Salisbury Terraces, behind the toxic Production Village off Wright St. The stream is a tributary of the Waitangi Stream.

A pohutukawa was recently left on the track - neatly planted in a beer crate and still with a label attached. Accepted as a donation it has now been planted on one of the upper areas in the reserve.

The reserve was once well maintained. Nowadays Council contractors come and go, and the state of the reserve has got progressively worse - infested with weeds and blackberry. WCC is supportive of communities who take responsibility for green areas, and will supply mulch and plants, and remove rubbish. Susan Cook is leading the project and liaising with Council Park & Reserves staff.

Three well-attended MCM work sessions have been held on the reserve, with younger children and a small dog paddling in the water. Rubbish has included soccer, cricket and rugby balls, old bottles and crockery - but mostly it has been a plastic and tin can mess.

Eventually, one day, we'd like steps zigzagging up to the top playing field, and picnic areas with fruiting trees in the lower open grassed area, perhaps with a Mt Cook Spring Festival to celebrate.

In the meantime, the work sessions restart on 15 February 2009 (10am to noon), and thereafter on the second Sunday of the month. Diary it now and join us then. As well as being great fun they have so far been held on brilliantly sunny days.

THE CARETAKER

Once there was a caretaker for the reserve and parks. He lived in a house above the park, by the Scottish Harriers' premises. There is still a flat area where the house was and garden plants in the bush. Papawai Reserve was "beautifully kept" and the streamside track always accessible. The last caretaker was Bruce Tunnicliffe, who was a bit of a character and who left in the late 1990s. The caretaker's house apparently had a fire and was pulled down after he left. According to locals, in the early days when there was a track rather than a road in Papawai a local resident had dammed the stream near the last house in Papawai Tce, providing a swimming hole which was popular with the local children.

TREASURES FOUND

In many parts of Mt Cook digging in the garden is akin to a mini archaeological dig. Old bricks from the several 19th-century brickworks in production in Mt Cook, along with old and newer glass bottles, are almost guaranteed to be dug up.

While unblocking the stream we found an old metal baby bath, a bundle of undelivered local newspapers, and remnants of a 21-inch metal pipe dating back to when the water supply was brought to the young Wellington city.

JOIN US
Sunday
15 Feb 2009
10am-noon

TREES QUIETLY IN WAITING

Demolition bulldozers that groaned away like giant iron dinosaurs have cleared the proposed Tasman Street supermarket site. A border of trees has been planted around the site, suggesting nothing is going to happen there for a while.

No resource consent has been granted for the vacant wasteland, but Foodstuffs has revealed a smaller format 'New World' supermarket is planned for its future, rather than the initially rumoured 'Pak 'n Save'. "The concept is still evolving... there are some key issues we need to resolve", commented property manager Ian Hutchison.

- 70 apartments will accompany the supermarket, divided into 4 blocks, at a height of 18 metres (six stories). When we saw their plans in November 2007, only 40 apartments were planned.
- The exact number of car parks is yet to be confirmed. Nearly 200 were on their earlier plans.
- Plans for a bottle store and petrol station have been dropped
- The BGI building façade and first 12 metres will be retained
- The two Victorian villas on Rugby Street have been saved

The council has raised concerns about the traffic impact on the area. Local residents remain concerned about safety and street level pedestrian access.

Mt Cook Mobilised has asked why demolition was permitted by the Council, before the future of the site had been confirmed. The community could have benefited longer from the YMCA and pool facilities. The swimming pool - Wellington's oldest - remains visible but only as a base for retaining the neighbour's wall (right).

MT COOK!
MOBILISED

DISASTER PREPAREDNESS

There has been a lot of activity in our area lately around preparing for a natural disaster. At Labour Weekend, Te Papa hosted a wide range of demonstrations and activities involving our helping agencies. These were very well attended.

Massey has a centre for natural hazard research and holds seminars and talks. Until people personalise the risks around, in particular, earthquakes and subsequent fire and tsunami, our prospects for survival are shaky.

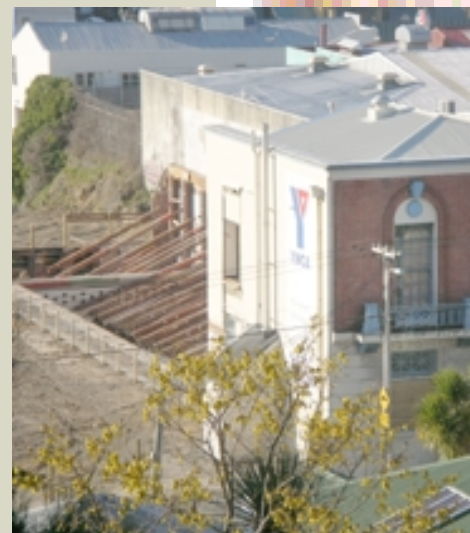
The TV3 presentation simulating a devastating earthquake and tsunami in Wellington was vivid and generally realistic and thought provoking. Sad that the emergency services had to leave Mt Cook to burn!

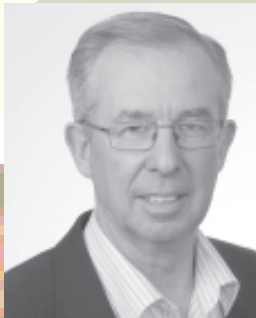
Mt Cook Mobilised recommends:

- have a plan for keeping in contact with family, friends and neighbours.
- have sufficient food and water for at least three days
- have batteries for torch and radio
- carry sturdy shoes and clothes in the car.

The Mt Cook Civil Defence Centre is at 27 Tasman St (in the basement of the Seventh Day Adventist Church). It meets on the third Tuesday every month.

Contact phone (04) 389 9297 or <michi.mulitalo@nzalb.govt.nz>





There is always something happening in Wellington. Recently I was Acting-Mayor – never dull – somewhat more challenging with bus strikes, nudism on beaches and the growing pigeon population!

The months ahead will have challenges too as Councillors strive to control rates to assist in ensuring an affordable city, more so in this time of economic downturn.

The Council is now embarking on the Long Term Council Community Plan (LTCCP) which amongst other things outlines the intentions for the next 10 years' expenditure (about \$330 million p.a., with responsibility for assets of more than \$6 billion). The challenge here is that many Council costs increase at a fast rate, eg resources for infrastructure maintenance and development.

Many of us belong to organisations with a funding relationship with the city. Each activity is worthwhile (I know that from my own interests!) but we sometimes overlook that this funding impacts on rates – the less palatable side of the relationship.

The LTCCP process allows considerable opportunity for public submissions and I do hope people will do so – do let me know if I can assist.

All good wishes for the summer break and please don't hesitate to contact me at any time ... Jenny and I are about the Wellington region for the whole of the period.

Ian McKinnon

Lambton Ward Councillor

021 227 8511 or

<ian.mckinnon@wcc.govt.nz>

Lambton Ward covers Mt Cook and the third councillor in this ward is Cr Stephanie Cook.

Big challenges face Mt Cook over the next few years. The proposed Basin Reserve flyover, Memorial Park and supermarkets at Tasman and John Streets – as well as proposed development on Adelaide Road – may bring big changes to the area.

I am strongly opposed to the flyover, bringing more traffic into Mt Cook and Mt Victoria, destroying the amenity values of the iconic Basin Reserve and necessitating a second Mt Victoria tunnel. A campaign is being organised to oppose it, which held its first meeting on 25 November.

The Adelaide Road Framework offers an exciting opportunity to re-develop this area of valuable inner city land. I have some strong concerns around the document, namely around the provision of community space, height limits for the buildings and the effects on the rest of Mt Cook. District Plan rules will need to be carefully thought through to make sure that development does not adversely affect existing residents.

No progress has been made on the supermarket site on Tasman Street. I have strong concerns about its impact on the area as I do about the proposed Memorial Park on Buckle Street. I am cautiously supportive of the latter but am very concerned about the effect it will have on Mt Cook School.

Finally, the Council will be consulting on its Long Term Council Community Plan in 2009. Councillors are doing some preliminary work on the Plan. If you have any ideas about what should and shouldn't be included, let me know!

Iona Pannett

Wellington City Councillor

(04) 384 3382, 021 227 8509

<iona.pannett@wcc.govt.nz>



The Waitangi Stream at the end of its run through Papawai Reserve, after the initial cleanup.

MT COOK T-shirts

YOUR 'BURB'S FUTURE IS IN YOUR HANDS



Price: \$25 Colour: Black Only

Order yours now by emailing mtcookmobilised@gmail.com

Chilli Jam

riceburger

Special to Mt Cook residents
Buy one get the second 50% off



Chilli Jam new Summer Menu

Chilli with spicy burgers, wraps and noodles
The fresh, fast and healthy way!

Our Spirit at Chilli Jam is one of fun, affordability and a great sense of style.

Pre-Xmas Tray Load of Food available

Book now for Chilli Jam Afternoon Functions (Free)

Phone 385 8 385 chillijam.co.nz

13 Adelaide Road (Basin Reserve)

Monday to Thursday 12.00-14.30 & 17.00-21.00

Friday, Saturday and Sunday 12.00-21.30

MT COOK! MOBILISED

community



Mt Cook Preschool Picnic

**Monday 1st December 2008
10am**

Papawai Gardens off Salisbury Tce
(turn right from street behind houses next to Prince of Wales Park)

Just turn up with your own picnic lunch and toys and meet other preschool parents & kids in your neighbourhood.

Coffee mornings in 2009!

Email mtcookmobilised@gmail.com for info
or ring Julia 385 1782 or Kirsty 384 8369

(If wet will be postponed to Monday 8th December)



OPEN 7 DAYS 11am—10pm
Basin Reserve, Adelaide Rd/Rugby St
920 0334 0800 CURRY TO GO
WE DELIVER



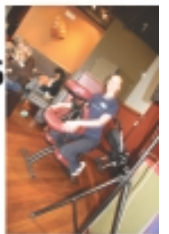
HOLY KNIT BATMANI KNITTING CIRCLE

7.30PM EVERY MONDAY

**LEARN HOW TO KNIT OR
SPEND SOME QUALITY KNITTING
TIME WITH GOOD COMPANY.
ALL WELCOME OF COURSE!**

**RELAX! 4-6PM FRIDAYS
FIVE BUCK TEN MINUTE
PRO SHOULDER AND BACK
MASSAGES IN THE GARDEN**

04.384.9085
WWW.THECROSS.CO.NZ
39 ABEL SMITH ST, TE ARO



PROUD SUPPORTERS OF MT COOK MOBILISED

NEW LABOUR MP FOR WELLINGTON CENTRAL

Grant Robertson, newly installed in the electorate office at 220 Willis St, says that local government issues make up more than 50% of the office's work.

Talking recently with Mt Cook Mobilised he sees a real opportunity to advocate for constituents with both local and central government. Grant cited the upgrading of Council housing - including Arlington and Central Park flats in our area, and the concerns some tenants had about their future housing ("more scary than exciting"). With a street-front office (unlike the Council), our local MP is available to talk with

residents. We also raised neighbourhood concerns about the Rolleston St Housing NZ apartments, noting that police are often seen there dealing with problems.

As an old suburb, Mt Cook is home to unique heritage stock. Grant sees the historical classification process as providing security and protection (we say the process has been sometimes deficient). We are both concerned about large empty sites and neglected buildings, under threat from redevelopment. These are not good for the community and the buildings need to be maintained and tenanted. Council



*Let Grant Robertson MP know
of any major issues you have that
concern Mt Cook.*
[<grantrobertson@parliament.govt.nz>](mailto:grantrobertson@parliament.govt.nz)

has been buying up property for the proposed Basin flyover: "bizarre", says our new MP.

On other Mt Cook issues, Grant likes the idea (in principle) of the

Adelaide Road-style planning for mixed developments close to the city, but we all need to monitor the detail - especially with building heights. During the election campaign he visited Mt Cook School to talk about Memorial Park. The Ministry of Culture & Heritage did not meet its pre-election deadline, and advice to Cabinet. The favoured design will now go to the incoming Government. While he personally favours either a trench or overpass for the road, the cost may be too high. Mt Cook's shortfall in community facilities gets a sympathetic hearing. The MP regards such facilities as important ways of bringing people together. We would agree.